

# Marine & Boat Tracking



# Why you should consider this market

The marine management software market is valued at USD 4.55 billion in 2025 and is forecast to expand to USD 7.12 billion by 2030, registering a 9.36% CAGR. This growth is propelled by regulatory mandates that require near-real-time emissions monitoring, rising fuel-efficiency targets, and the need to synchronize dispersed fleet operations across oceans.

Source: <https://www.mordorintelligence.com/industry-reports/marine-management-software-market>



## Key problems you can solve



No real-time visibility once boats leave shore



Loss of contact in remote or offshore areas



Difficulty locating boats during emergencies



Unplanned route changes due to weather or currents



Risk of boat theft or unauthorized usage



Delayed response during SOS situations



No proof of route, movement, or trip completion



Limited data for compliance and reporting

# What you can offer with **Uffizio**



Tracking and  
Geo-fencing for  
marine zones



SOS / panic alerts  
for crew and  
passengers



Fuel monitoring  
and fuel usage  
analysis



RPM monitoring for  
engine health and  
performance



Maintenance and  
service scheduling  
alerts



Temperature  
monitoring for  
onboard storage



Area measurement  
for fishing or  
operational zones

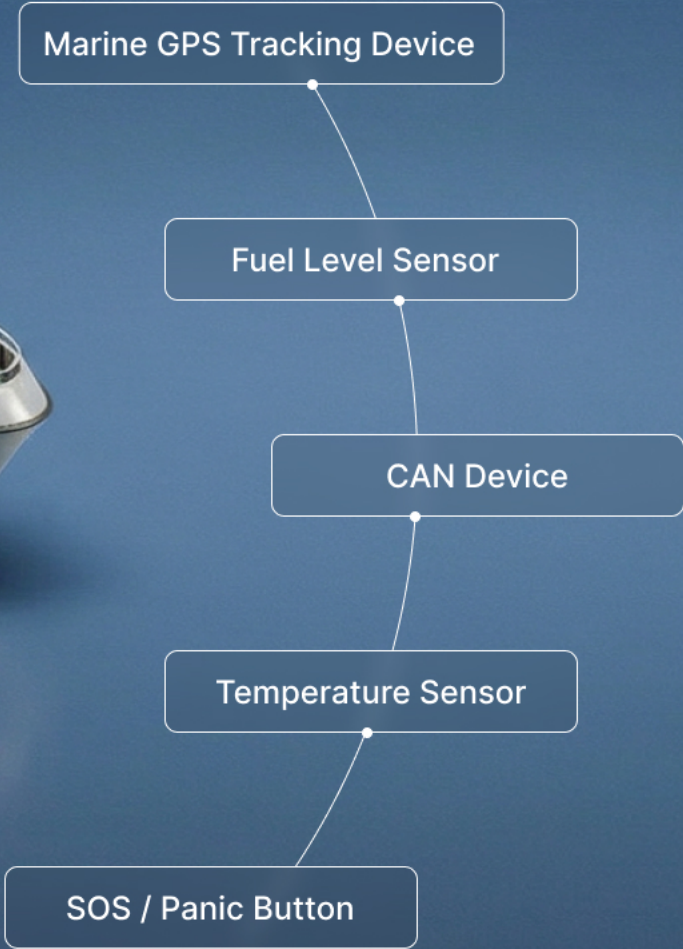


Expense tracking  
for trips and  
operations

## **Benefits** that help you close deals faster

- ✓ Complete visibility of boats at sea
- ✓ Improved crew and passenger safety
- ✓ Better fuel and operating cost control
- ✓ Reduced breakdowns and downtime
- ✓ Safer storage of temperature-sensitive cargo
- ✓ Stronger compliance and reporting readiness
- ✓ Easy management of multiple boats

# Hardware used in this Industry



# 01

USE CASE

## Fishing boat operations

Commercial fishing boats operate far from shore for long hours. Owners need visibility of boat location, fishing areas, fuel usage, storage conditions, and crew safety.

This use case shows how Uffizio helps fishing operators stay safe, compliant, and cost-efficient at sea.



# 01 Boat leaves shore

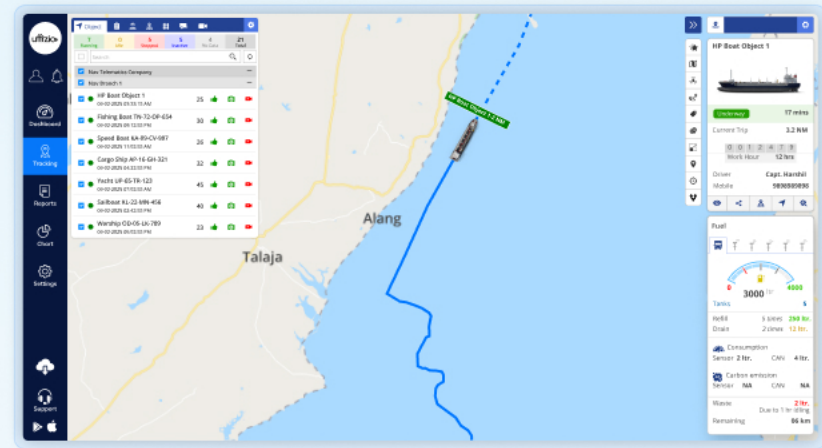
## Problem

No visibility once boat moves offshore.



## Solution

Live GPS tracking shows real-time location.



# 02 Fishing area monitoring

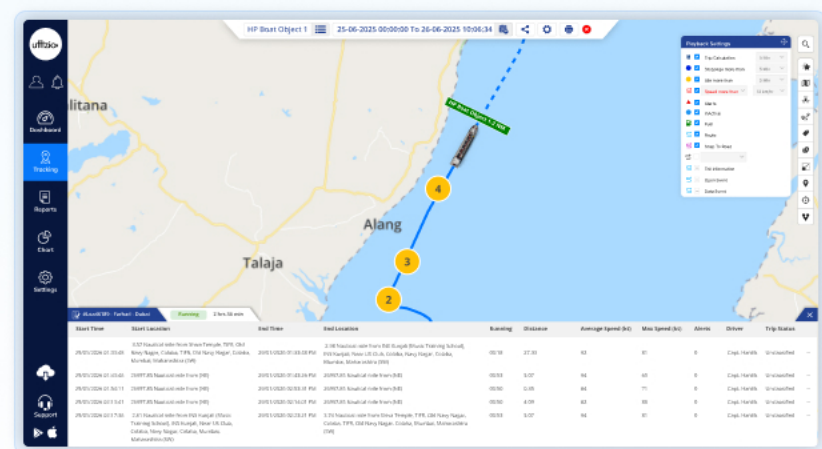
## Problem

No clarity on fishing zones covered.



## Solution

Route playback shows the complete path the boat followed, making it easy to review covered fishing areas.



## 03 Fuel usage during long trips

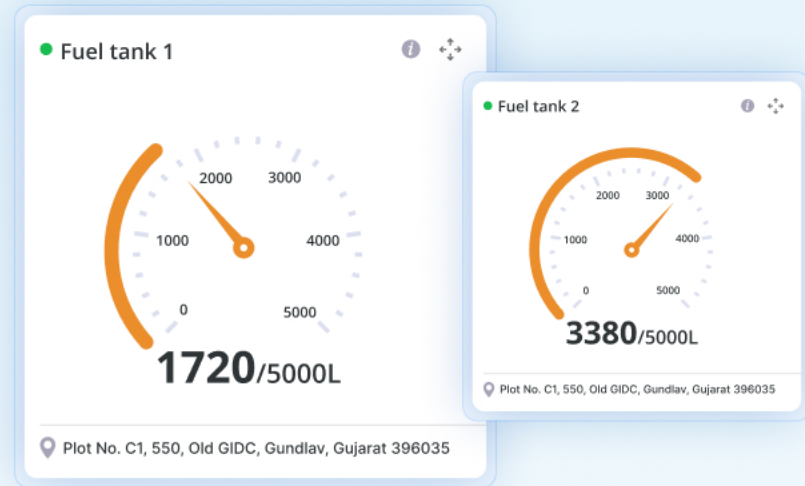
### Problem

Fuel consumption is high and uncontrolled.



### Solution

Fuel monitoring with multiple sensors in single tank tracks usage and gives fuel accuracy.



## 04 Engine overstress

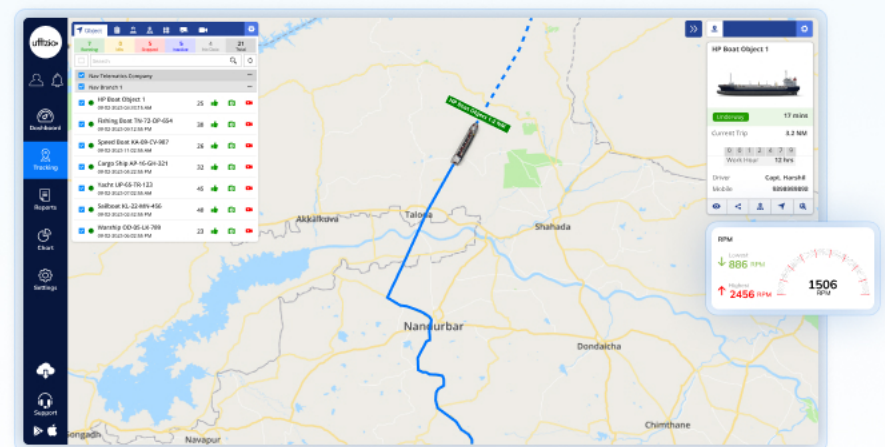
### Problem

High RPM damages engines over time.



### Solution

RPM monitoring detects abnormal engine behavior.



## 05 Storage temperature control

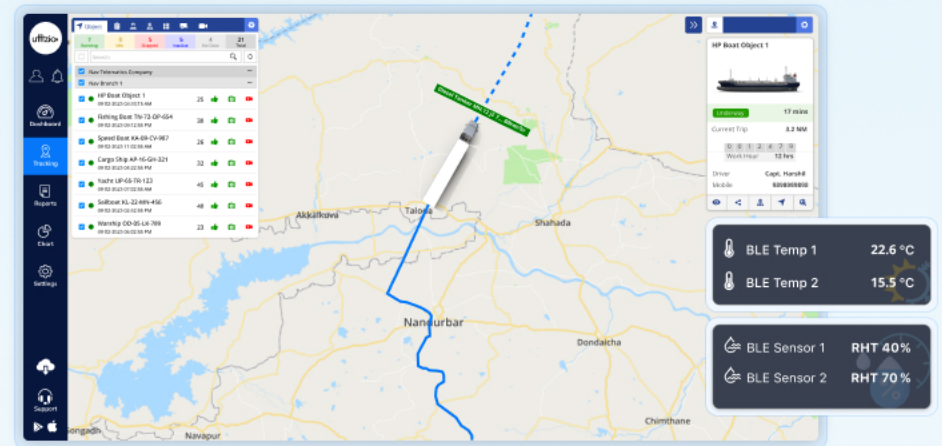
### Problem

Fish quality drops due to poor storage conditions.



### Solution

Temperature monitoring ensures proper cold storage.



## 06 Route deviation or drift

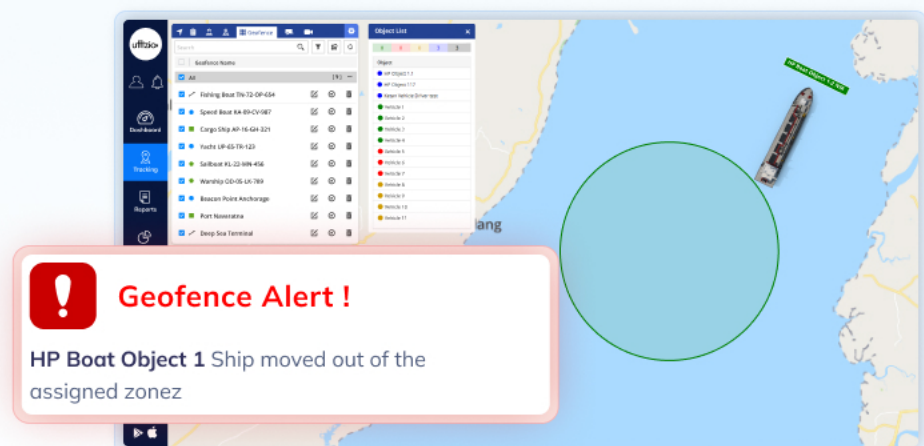
### Problem

Boats move outside planned routes unknowingly.



### Solution

Geo-fencing alerts for route and zone breaches.



## 07 Emergency at sea

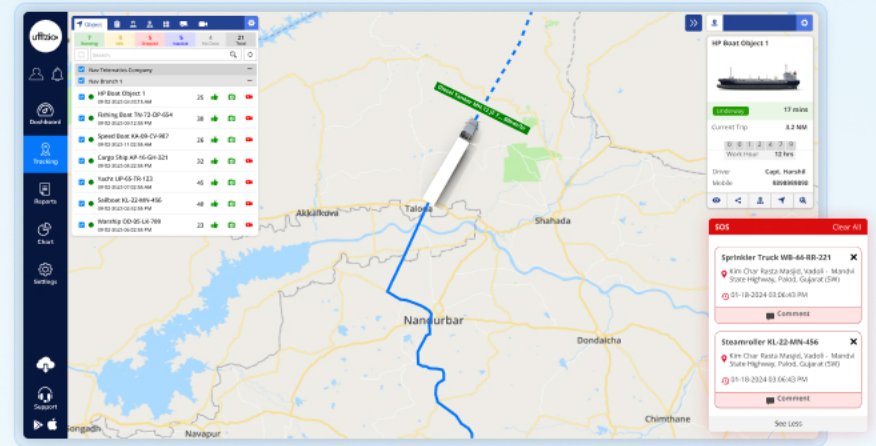
### Problem

No quick way to alert authorities.



### Solution

SOS alert sends instant emergency notification.



## 08 Maintenance neglect

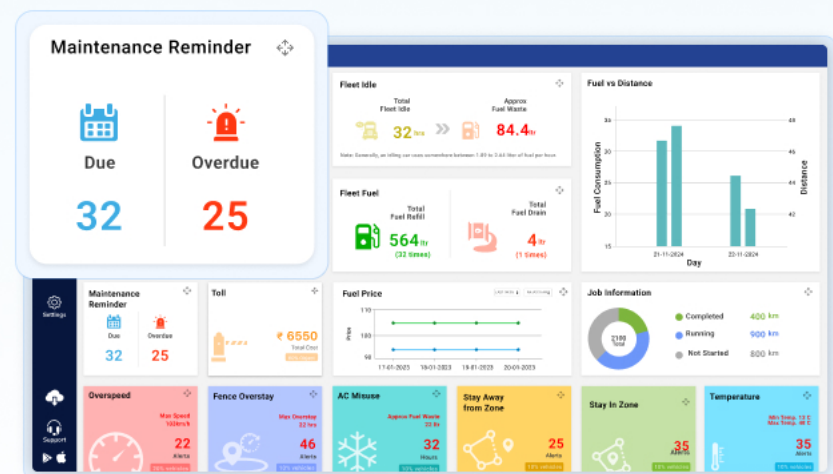
### Problem

Breakdowns happen mid-sea.



### Solution

Maintenance alerts prevent unexpected failures.



## 09 Trip proof & compliance

### Problem

No verifiable records for inspections.



### Solution

Job detailed summary and reports provide clear proof.

Job Detail Summary (01-11-2024 12:00 AM - 20-11-2024 11:59 PM)																			
Job Name	Date	Object	Status	Planned Start Time	Actual Start Time	Diff. erence	Odometer		Planned End Time	Actual End Time	Diff. erence	Est. Distance	Distance				Duration		
							Start	End					Distance	Distance %	On Route	Off Route		On Route %	Off Route %
Alkbergur Bakfren Gosberg	07-12-2024	UN0277 3174 ABC3174	Completed With Error	07-12-2024 11:28 AM	08-11-2024 07:00 PM	-304	585	589	08-12-2024 11:28 AM	08-12-2024 06:13 PM	-17	0.0	425	100	420	0.0	100	0	311
Checkpoint	Location	Status	Driver	QR Code	Estimated Arrival	Actual Arrival	Difference	Estimated Departure	Actual Departure	Difference	Load	Event	Perceptions	Actual	Est	Diff. erence	Checkpoint	Other	
Alkbergur Chow-ME1	Alkbergur Chow-ME1	Visited	No Driver Found		28-11-2024 07:30 PM			07-12-2024 05:11 PM		0.0	0.0	0.0		0000	370.11	378.11	Lowrig		
SH12, Publ.Fix, Usor Pradon	SH12, Publ.Fix, Usor Pradon	Un- Authorized	No Driver Found		09-12-2024 12:01 AM			09-12-2024 04:39 PM		0.0	0.0	0.0		0000	16.38	16.38			
SH13, Publ.Fix, Usor Pradon	SH13, Publ.Fix, Usor Pradon	Un- Authorized	No Driver Found		09-12-2024 06:40 PM			09-12-2024 07:40 PM		0.0	0.0	0.0		0000	03.00	03.90			
SH13, Publ.Fix, Usor Pradon	SH13, Publ.Fix, Usor Pradon	Un- Authorized	No Driver Found		09-12-2024 08:50 PM			09-12-2024 05:19 PM		0.0	0.0	0.0		0000	09.00	09.90			
Ravn Kari 9009	08-12-2024	UN0277 3174 ABC3174	Completed With Error	08-12-2024 06:14 AM	08-11-2024 05:27 PM	-516	0.0	0.0	09-01-2025 11:58 PM	20-11-2024 03:06 PM	-116	0.0	0.0	0.0	0.0	0.0	100	0	0888

## Result

Safer fishing operations with better cost and quality control.

40%

Reduction in fuel wastage

35%

Fewer engine-related  
breakdowns

50%

Improvement in catch quality due  
to temperature control

# 02

USE CASE

## Tourism & passenger ship operations

Tourism ships and passenger boats operate on fixed schedules and carry paying passengers where safety, experience, and reliability are critical. Delays, unsafe movement, or lack of visibility directly impact customer satisfaction and operator reputation. This use case shows how Uffizio helps tourism operators run safer, smoother, and more professional voyages.



## 01 Scheduled trip begins

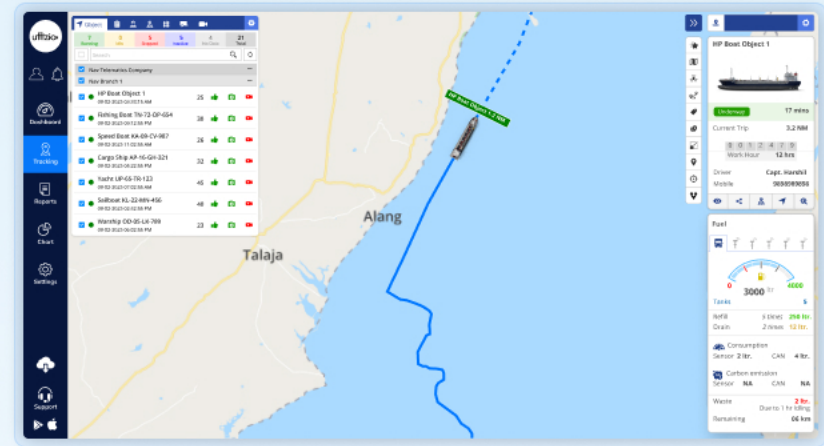
### Problem

Operators lack live visibility once the ship leaves the dock.



### Solution

Live GPS tracking shows real-time ship location.



## 02 Route & speed control

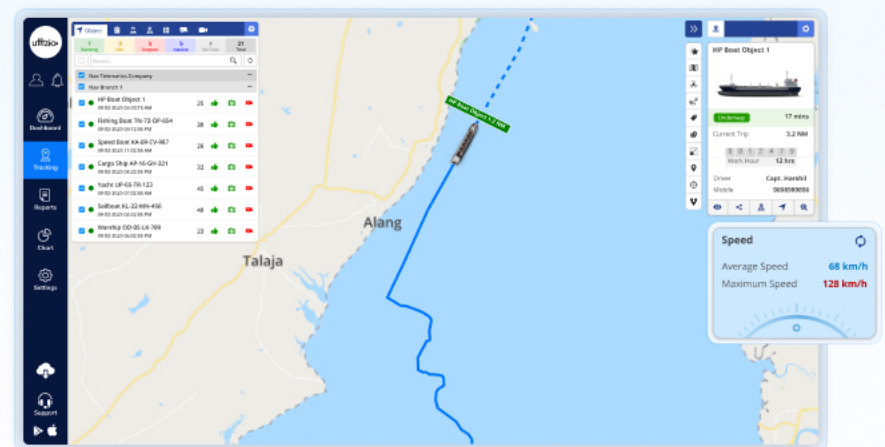
### Problem

Unsafe speed or route deviation risks passenger safety.



### Solution

Speed monitoring and route tracking ensure controlled movement.



## 03 Crew & engine stress during continuous trips

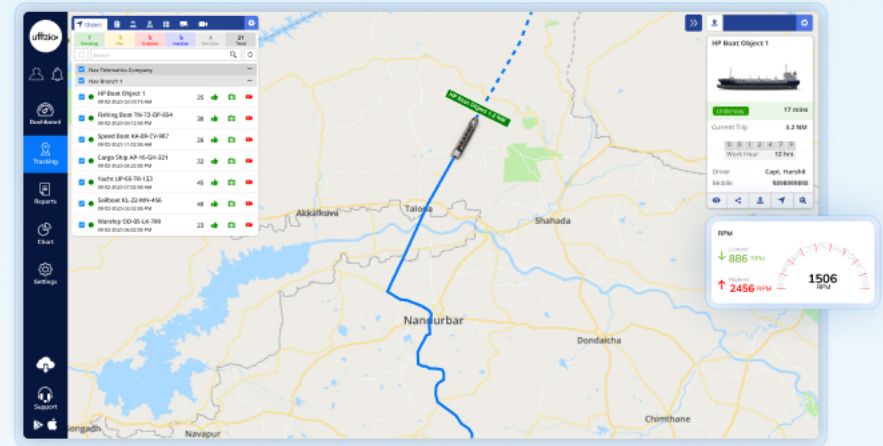
### Problem

High RPM and overuse cause breakdowns mid-trip.



### Solution

RPM monitoring helps maintain engine health.



## 04 Multiple trips in a day

### Problem

Tracking multiple daily trips manually leads to missed details and confusion.



### Solution

Trip history and route playback automatically record every completed trip.

Branch	Object	Object Brand	Object Model	HP	HP Object Info 1	HP Object Info 2	Driver	EMR No.	Direction	Running	Location	Work	Working Days	Running V/S	First Ignition On	Last Ignition Off	Speed	Course based on	Remarks
										37.75	04:39:14	04:06:08	5.0						
HP Boat	HP 048002	Cell	Tower	0			HP FIVE	359823108		22.45	03:42:59	05:58:38	11:42:21	1	890323208	890323208	0	10	NA
HP Boat	HP Fuel	HP Fuel	HP Fuel	0			HP FIVE	328613039		9.20	00:31:05	16:23:28	00:35:22	1	890323208	890323208	0	10	NA
HP Boat	HP Object 01	Taka	WV020	ALS			No Drv	112230081		5.54	00:23:25	13:13:25	00:24:25	1	890323208	890323208	14	74	NA
HP Boat	HP	Shanzer	AMR				HP Drv	1289		6.81	00:11:30	17:38:30	00:02:30	1	890323208	890323208	20	42	NA
HP Boat	HP 003	Highmer	ACE	MTC	3025		HP Drv	90909		6.81	00:00:00	02:01:40	13:40:17	1	890323208	890323208	0	0	NA
HP Boat	HP Boat	General	General	General			No Drv	142098014		8.0	00:00:00	00:00:00	00:00:00	0			0	0	NA
HP Boat	HP Boat	General	General	General			No Drv	795734002		8.0	00:00:00	00:00:00	00:00:00	0			0	0	NA
HP Boat	HP Boat	General	General	General			No Drv	112234403		8.0	00:00:00	00:00:00	00:00:00	0			0	0	NA
HP Boat	HP Boat	General	General	General			No Drv	11223207		8.0	00:00:00	17:42:00	00:00:00	0			0	0	NA
HP Boat	HP Boat	General	General	General			No Drv	483740240		8.0	00:00:00	00:00:00	00:00:00	0			0	0	NA
HP Boat	HP Boat	General	General	General			No Drv	112234403		8.0	00:00:00	00:00:00	00:00:00	0			0	0	NA
HP Boat	HP Boat	General	General	General			No Drv	386071108		8.0	00:00:00	00:00:00	00:00:00	0			0	0	NA
HP Boat	HP Boat	General	General	General			No Drv	676075010		8.0	00:00:00	17:42:00	00:00:00	0			0	0	NA
HP Boat	HP Boat	General	General	General			No Drv	22		8.0	00:00:00	17:42:00	00:00:00	0			0	0	NA
HP Boat	HP Boat	General	General	General			No Drv	151000016		8.0	00:00:00	17:42:00	00:00:00	0			0	0	NA

## 05 Unauthorized or off-schedule movement

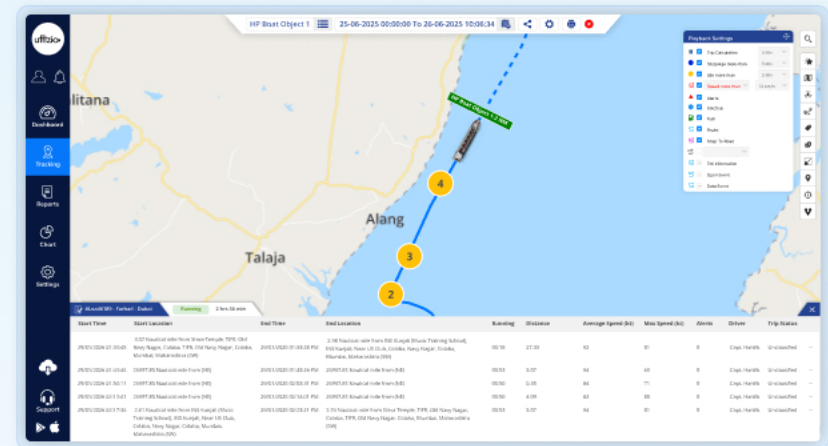
### Problem

Managers lack clear records to confirm whether trips followed planned timings and routes.



### Solution

Trip history and playback show actual trip timings and movement, helping verify schedule compliance.



## Result

Safer journeys with better passenger experience and operational control.

35%

Improvement in on-time trip completion

40%

Reduction in unsafe speed and route violations

30%

Fewer engine-related disruptions