

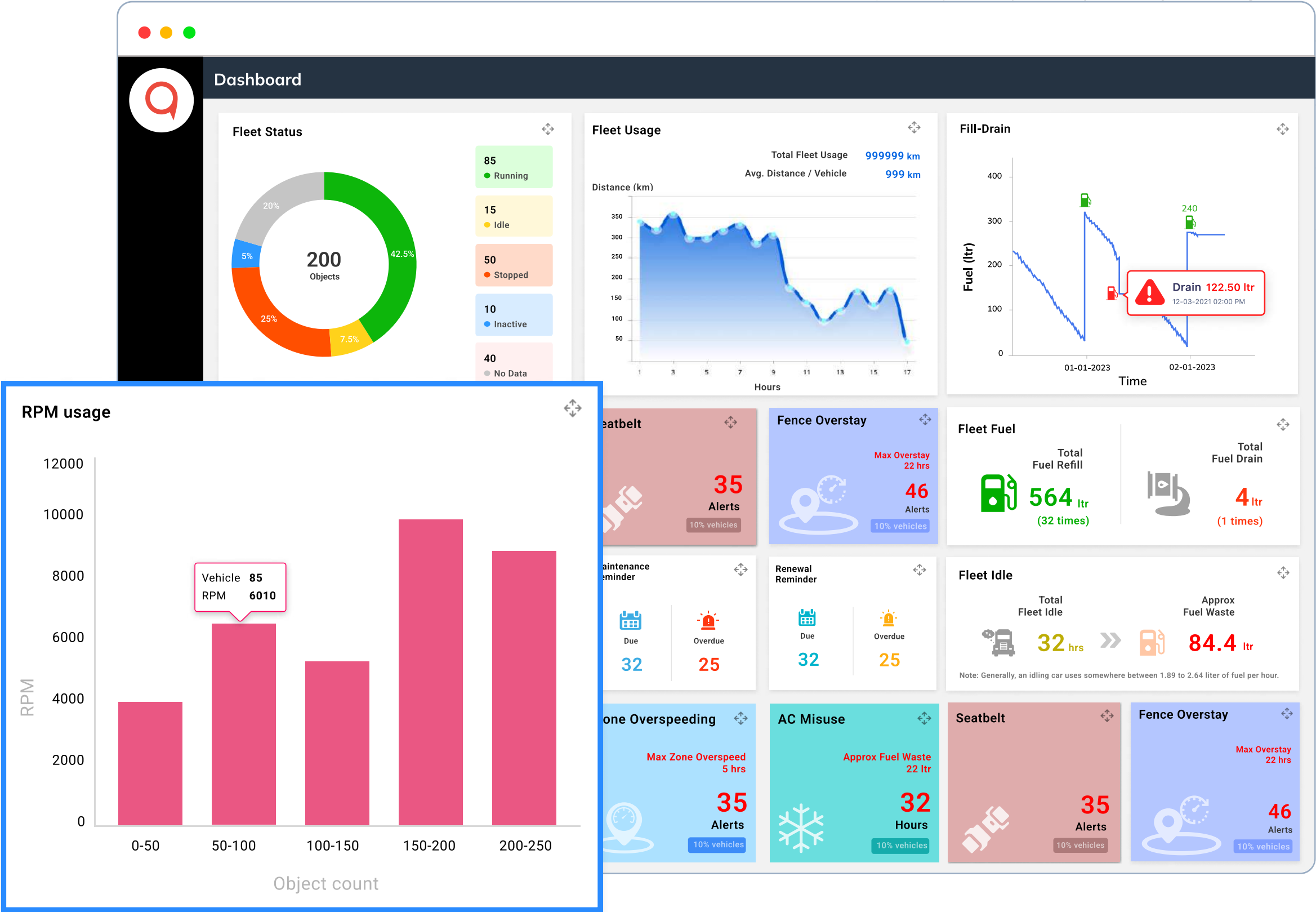
RPM MONITORING



Introduction

Step into the future of fleet management with RPM Monitoring—a groundbreaking technology that offers a real-time glimpse into your vehicle’s engines. RPM, or revolutions per minute, is the core of engine activity, and RPM Monitoring brings this metric to life.

This brochure unveils how RPM Monitoring empowers proactive decision-making, enabling you to anticipate maintenance needs, promote fuel-efficient driving, and elevate overall fleet productivity. Embrace the data-driven evolution of fleet management and experience the power that RPM Monitoring brings to your operations.



Customizable RPM Threshold

Empower fleet managers with the flexibility to set specific RPM limits or ranges based on individual preferences, vehicle types, or driving conditions. This allows for fine-tuning the RPM monitoring system to align with unique operational requirements. Fleet managers can **define upper and lower RPM limits** for each vehicle, ensuring that drivers do not over-rev the engine excessively.

Moreover, different vehicles in the fleet can have tailored RPM thresholds to account for variations in engine specifications and performance characteristics.

Additionally, RPM thresholds can be **adjusted based on driving conditions**, such as steep inclines or adverse weather, optimizing engine performance during specific situations. This adaptability ensures optimal safety and fuel efficiency while meeting regulatory requirements where applicable.

Object

Active	Connection Type	Connected Sensor	Reading Type	Work Hr Calculation	Calibration
<input checked="" type="checkbox"/>	Analog Voltage	Ignition	Direct	<input checked="" type="checkbox"/>	
<input checked="" type="checkbox"/>	Analog Voltage	Ignition	Direct	<input type="checkbox"/>	
<input checked="" type="checkbox"/>	Analog Voltage	RPM	Direct	<input checked="" type="checkbox"/>	
<input checked="" type="checkbox"/>	Analog Voltage	Select	Direct	<input type="checkbox"/>	

RPM Calibration

RPM Factor*

1

RPM From*

1000

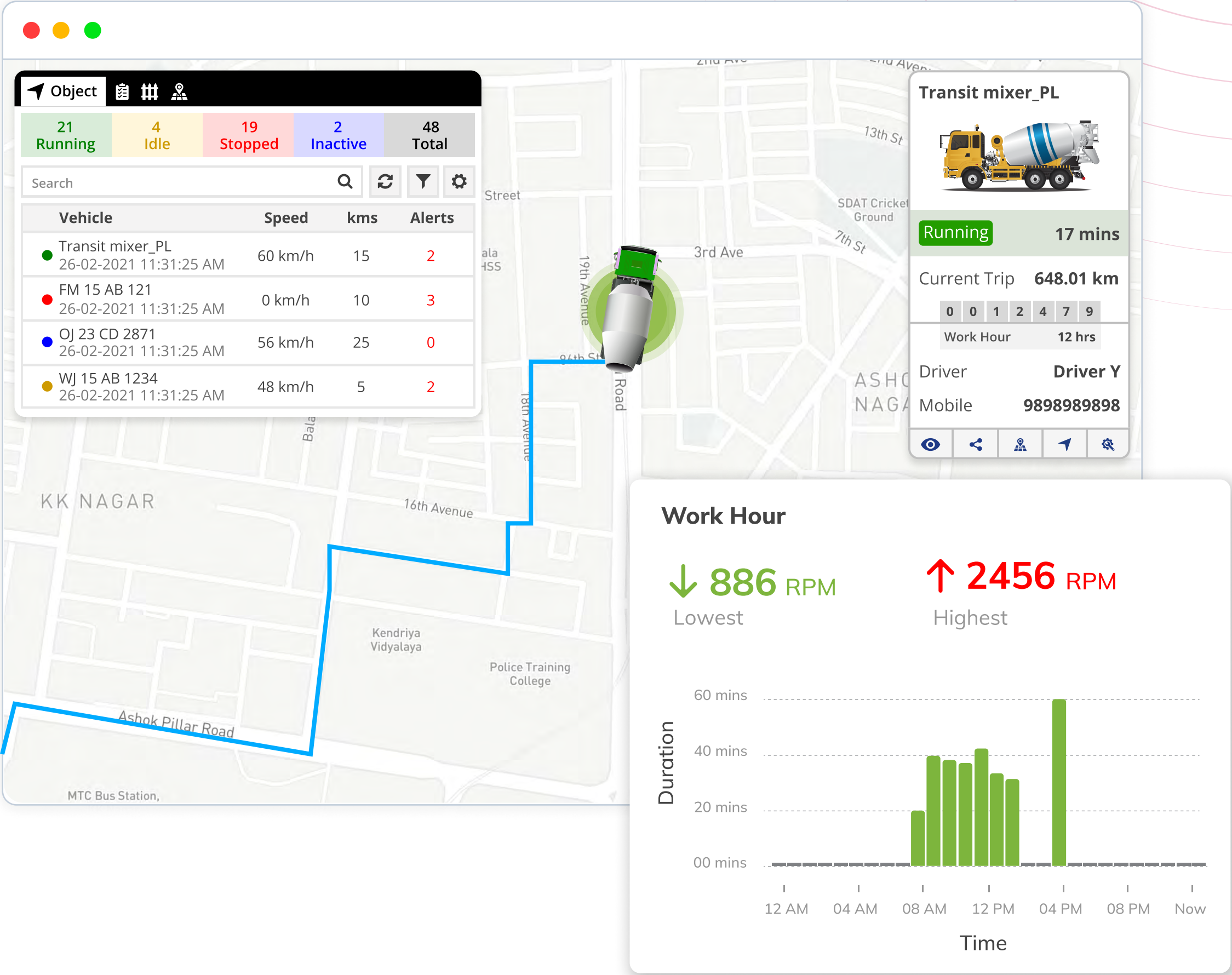
RPM To*

4500

Realtime RPM Monitoring

Gain instant insights into vehicle engine performance with RPM Monitoring. Fleet managers have **immediate access to RPM readings**, enabling them to track and analyze RPM fluctuations during diverse vehicle operating scenarios. Real-time alerts and notifications can be configured to promptly inform managers if RPM surpasses predefined thresholds, facilitating swift action to rectify potential issues and ensure vehicle safety.

This proactive RPM monitoring approach empowers fleet managers to make informed decisions, optimize maintenance schedules, and improve overall fleet efficiency by promoting responsible driving practices and early detection of engine irregularities.



Instant Alerts

Alerts notify fleet managers about potential issues or events related to engine RPM.

- **High RPM Alert**
This alert is triggered when the engine RPM exceeds a predefined upper threshold. It notifies fleet managers that a vehicle is operating at a high RPM, which could indicate aggressive driving, speeding, or excessive load on the engine.
- **Low RPM Alert**
This alert is activated when the engine RPM falls below a predefined lower threshold. This alert can signal potential issues such as engine stalling, poor fuel efficiency, or insufficient power output.
- **Idling RPM Alert**
This alert notifies fleet managers when a vehicle is idling at high RPM for an extended period. Excessive idling can waste fuel, increase emissions, and contribute to unnecessary engine wear.
- **Geofencing with RPM Alerts**
Alerts are triggered when a vehicle enters or exits a designated area while exceeding RPM limits.



High RPM

Alert: RPM crossed above threshold of 4000
due to excess load

RPM: 4300



Low RPM

Alert: RPM below threshold of 900 due to
engine stalling

RPM: 892



Idling RPM

Alert: Idling since 05 mins

RPM: 800



Geofencing

Alert: Out of geofence

RPM: 2100



Insightful Reports

- ### RPM Status Report

The RPM status report offers a real-time snapshot of the RPM status for individual vehicles at a specific moment. Fleet managers can instantly view the RPM readings of each vehicle in the fleet and determine whether any vehicle is currently operating at RPM levels that warrant attention.
- ### RPM Summary Report

The RPM summary report provides a concise overview of RPM data for a selected time period. It includes key RPM metrics such as average RPM, maximum RPM, and minimum RPM for each vehicle in the fleet. This report is useful for fleet managers to quickly assess RPM performance across the entire fleet and identify vehicles that may require further investigation or maintenance.

RPM Summary								
	Object	Object Brand	Object Model	Port	Working Duration	Running	Stop	Distance
+	DAFTC18	DAF	DAF01	Analog Input1	18:20	16:00	45:00	285.60
-	TATAMC1	TATA	TMC1	Analog Input2	29:13	20:00	56:01	386.64
From Working Date		To Working Date	Duration	Working Duration	Location			
10-08-2023 09:42:52 AM		10-08-2023 10:23:40 AM	00:41	00:41	A star building, near RPF Ground, Ganeshwadi, Valsad, Gujarat (NE)			
10-08-2023 05:03:42 PM		10-08-2023 05:13:02 PM	00:50	00:09	Cash N Carry Mega Store, Abrama, Abrama Village, Valsad, Gujarat (NW)			
10-08-2023 06:23:23 PM		10-08-2023 07:08:55 PM	01:36	00:46	Abrama-Dharampur Rd, Sonanagar, Valsad, Gujarat (NW)			
11-08-2023 04:16:44 PM		11-08-2023 04:16:44 PM	00:00	00:00				
+	EB-1230	Eicher	E00321	Analog Input3	11-08-2023 02:52 PM	1004.04		

RPM Status								
Status	Object	Object Brand	Object Model	Location	Port	Last Data Time	Rpm value	
	TATAMC1	TATA	TMC1	The Metropolis, Opp. S.T. Wrkshop, Abrama, valsad, Gujarat (SE)	Analog Input1	16-08-2023 01:51 PM	994.00	
	DAFTC18	DAF	DAF01	A star building, near RPF Ground, Ganeshwadi, Valsad, Gujarat (NE)	Analog Input2	12-08-2023 04:20 PM	1124.02	
	EB-1230	Eicher	E00321	Abrama-Dharampur Rd, Sonanagar, Valsad, Gujarat (NW)	Analog Input3	11-08-2023 02:52 PM	1004.04	
	GJ 15 TL 2012	Mahindra	MD1	Cash N Carry Mega Store, Abrama, Valsad, Gujarat (NW)	Analog Input4	08-08-2023 01:54 PM	984.05	
	HDPC01	Hyundai	HD123	Tukwada, Salvav, Vapi, Gujarat (SE)	Analog Input5	05-08-2023 10:10 AM	880.00	
	VAB-987	Volvo	V0011	Abrama-Dharampur Rd, Sonanagar, Valsad, Gujarat (NW)	Analog Input6	01-08-2023 11:12 AM	765.04	

Unlocking **Construction Fleet** Potential with RPM Insights

Challenges

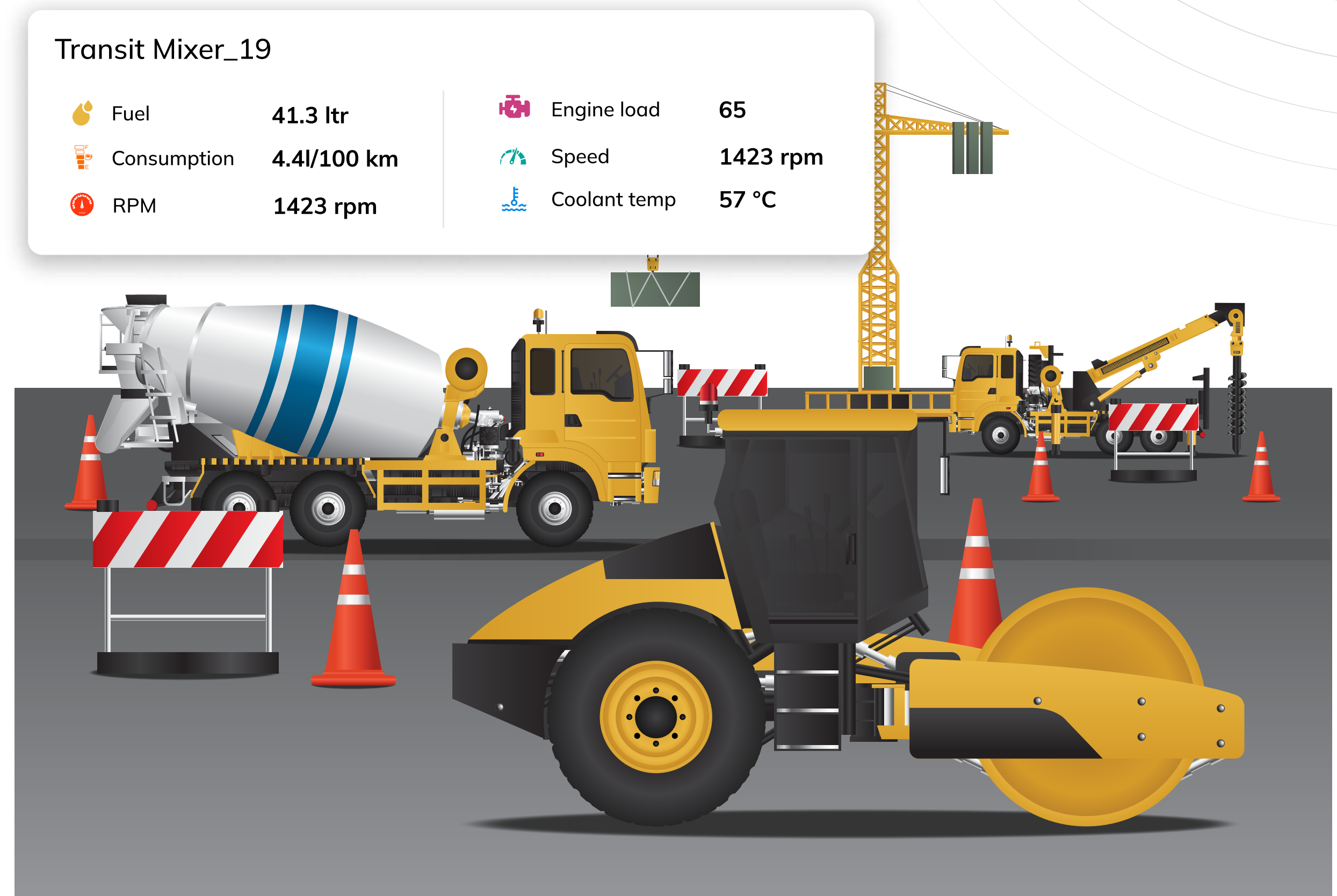
- Suboptimal equipment efficiency and performance due to inconsistent RPM levels.
- Difficulty in scheduling timely maintenance, resulting in unplanned breakdowns and downtime.

Solution

- Engine work hour tracking for comprehensive equipment utilization analysis.
- Customizable RPM thresholds and real-time alerts for RPM deviations.
- Real-time RPM monitoring integrated into heavy equipment fleet.
- Equipment utilization analysis to optimize equipment allocation.
- Comprehensive reporting for data-driven decision-making.

Results

- Proactive maintenance planning, reducing downtime and costs.
- Optimized equipment efficiency and improved fuel economy.
- Informed decision-making and streamlined fleet operations.



Powering Mining Efficiency and Reliability with RPM Monitoring

Challenges

- Suboptimal machinery performance and fuel efficiency due to unmonitored RPM levels.
- Difficulty in predicting maintenance needs, leading to unplanned downtime.
- Limited insights into engine health and machinery reliability.

Solution

- Proactive maintenance based on RPM data for minimized downtime.
- Customizable RPM thresholds with real-time alerts for deviations.
- Real-time RPM monitoring for continuous data collection.
- Fuel efficiency analysis for reduced fuel consumption.

Results

- Extended machinery lifespan and reduced equipment replacements.
- Streamlined maintenance planning and improved fleet reliability.
- Predictive maintenance, reducing unplanned downtime.
- Enhanced machinery performance and fuel efficiency.



Alerts

Object	Enterprises		
Alert name*	FleetTrack		
Alert type*	Free Wheeling		
Based on*	Accelerator Pedal Position		
RPM*	2548	Less Than	
Duration*	2h	Seconds	
Speed Tolerance*	70 km/h		
Text*	Free Wheeling		
Valid Day(s)	<input checked="" type="radio"/> Everyday <input type="radio"/> Custom		
Valid Time	00	To	23 59
Action	<input checked="" type="checkbox"/> SMS <input type="checkbox"/> Email <input type="checkbox"/> Notification		

RPM Monitoring for Efficient **Trucking Fleet** Management

Challenges

- Lack of real-time insights into engine RPM levels hindering eco-friendly goals.
- EcoTrans Logistics aims for fuel efficiency and reduced emissions.

Solution

- Real-time RPM monitoring for eco-friendly fleet management.
- Customized eco-friendly RPM thresholds with real-time alerts.
- Emission reduction analysis to optimize fuel efficiency.
- Eco-driving training based on RPM data and reports.

Results

- Empower drivers as eco-conscious advocates for sustainable trucking.
- Strengthen green credentials and attract eco-conscious customers.
- Achieve eco-trucking excellence with optimized fuel efficiency.
- Substantial fuel cost savings and reduced carbon footprint.



⚠ Idling

Idling since 5 mins, RPM 800



Our software is designed to be **flexible, scalable, and customizable**.
We understand that every business is unique, and we work closely with our customers to ensure that our solutions are tailored to meet their specific needs.

Thank you!



info@uffizio.com | www.uffizio.com