

PARTS INVENTORY



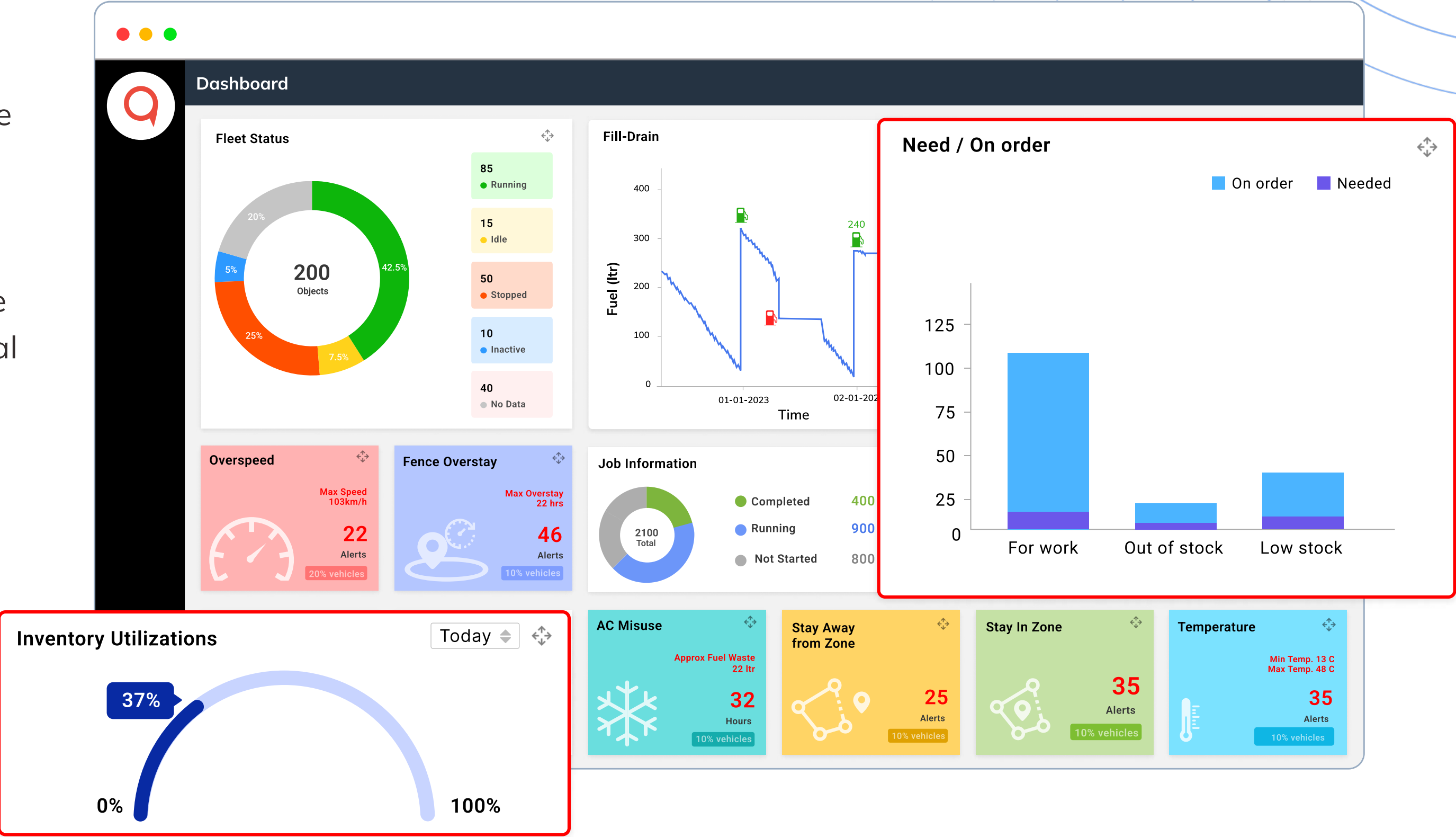
Reminder **Time to Reorder**



Introduction

Effective parts inventory management is the backbone of a successful fleet maintenance strategy. It ensures that the right parts are available at the right time, minimizing downtime, and keeping your vehicles on the road.

The ability to control inventory levels, track part usage, and streamline procurement processes can significantly impact your fleet's operational efficiency and bottom line.









Centralized Inventory Management

Gathering all inventory information into a single, streamlined system creates unified inventory control.

It provides a centralized view of inventory, streamlines control, and replenishment, improves data accuracy, and enhances decision-making for businesses with multiple locations or warehouses.

This efficient approach simplifies inventory management and reduces manual efforts, ensuring consistency and visibility across the organization.

Parts Master Overview									
Part No	Part Name	Part Brand	Object Brand	Object Model	Category	Type	Threshold Quantity	Warranty Period	Storage Location
MRFT46	MRF Tires	MRF	MRF	M46	Tire	Tire1	560	6 Months	Stockroom 6th raw
APT22	Apollo Tires	Apollo	Apollo	A22	Tire	Tire2	520	6 Months	Stockroom 7th raw
90D6B1	Philips Halogen Headlight Bulb	Philips	Philips	PHB	Bulb	Bulb	150	3 Months	Stockroom 2nd raw
CVD15	Talon Pipe	Talon	Talon	TP15	Pipe	Pipe	300	1 Year	Stockroom 3rd raw
AV012	Apollo Valves	Apollo	Apollo	V022	Valve	Valve	75	1 Year	Stockroom 4th raw
FC28	Flux Cap.								

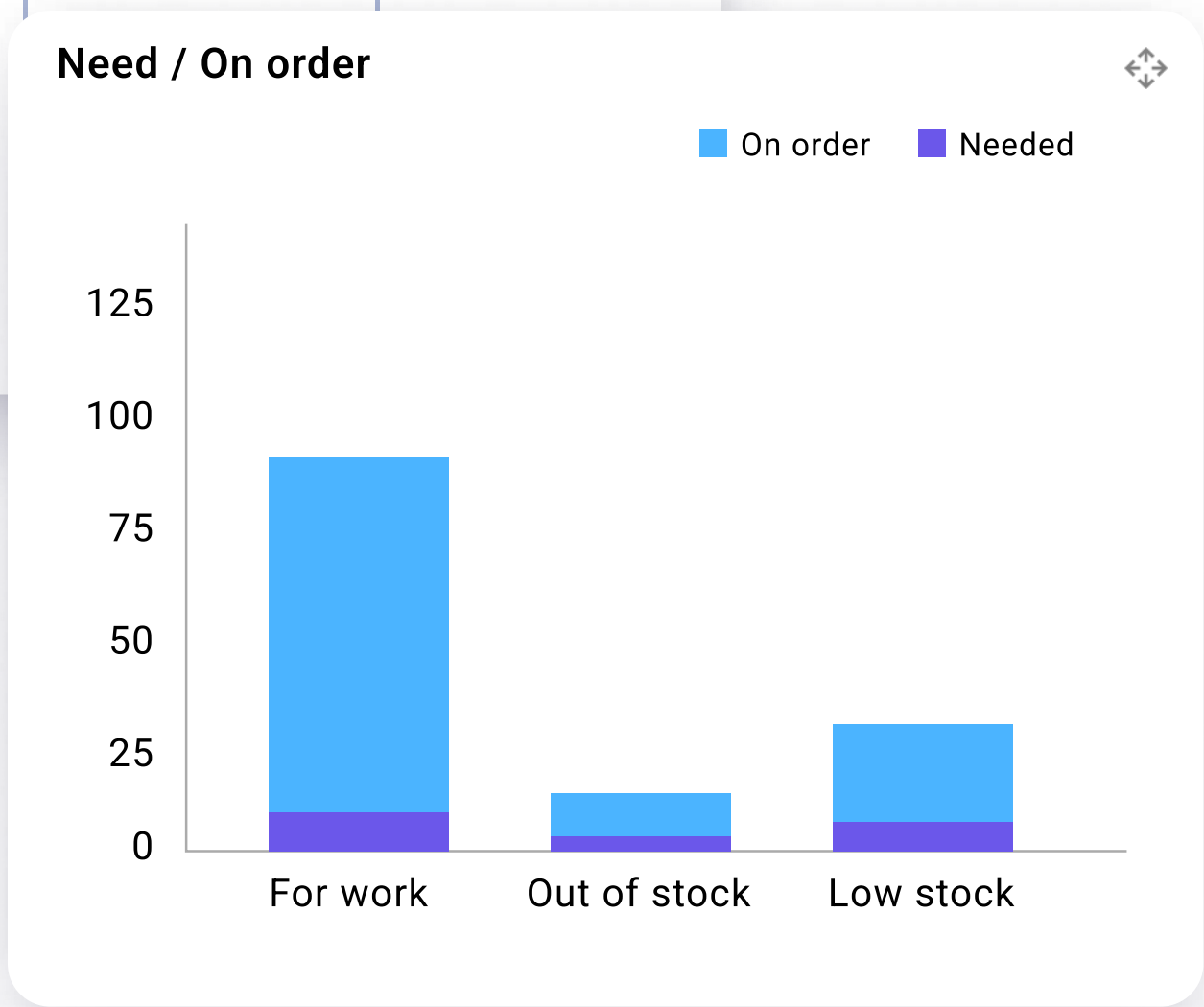
Parts Purchase Overview						
Company	Invoice No	Invoice Date	Seller	Parts	Total Quantity	Amount
Fleetx Technologies Pvt Ltd.	7098	15-05-2023	Mukesh		300	\$22000.50
Mahindra Telematics	1765	21-05-2023	Rohit		100	\$10000.04
iTriangle Infotech Pvt Ltd.	5023	04-06-2023	Ramesh		80	\$9000.63
Kale Logistics Solutions Pvt Ltd.	0467	20-04-2023	Kishan		280	\$18000.02
Efkon India Pvt Ltd.	8098	10-06-2023	Mahesh		160	\$12000.45
Trimble Inc.	9875	21-06-2023	Suresh		60	\$7000.54

Real-time Inventory Tracking

Offer fleet managers immediate access to accurate and up-to-date information about their parts inventory. When parts are received, issued, or transferred, the software instantly updates the inventory levels, ensuring a real-time view of stock availability.

This visibility enables efficient decision-making, helping fleet managers schedule maintenance tasks only when the necessary parts are on hand, reducing downtime.

Parts Inventory			
Part Name	Part No	Quantity Threshold	Available Quantity
Avon Turbospeed Tires - 695x185mm	670H15	560	580
2 HP Motor 200V	A137	70	90
Manthorpe Radiator Pipe Guide Seal 10mm	GRS-FF	300	280
Talon Pipe Cover 15mm (3m)	CVD15/3	350	300
Apollo Valves, 1" Stainless Steel Ball-Cone	A116	55	75
121 Gigawatt Flux Capacitor	121G		
Philips Standard Halogen Headlight Bulb	9006B1		
Trash Truck Hydro Filter	02066202		



Barcode/ QR code Capability

Allow your clients for efficient tracking and management of inventory items. Each part is assigned a unique barcode or QR code, enabling real-time tracking and accurate data capture.

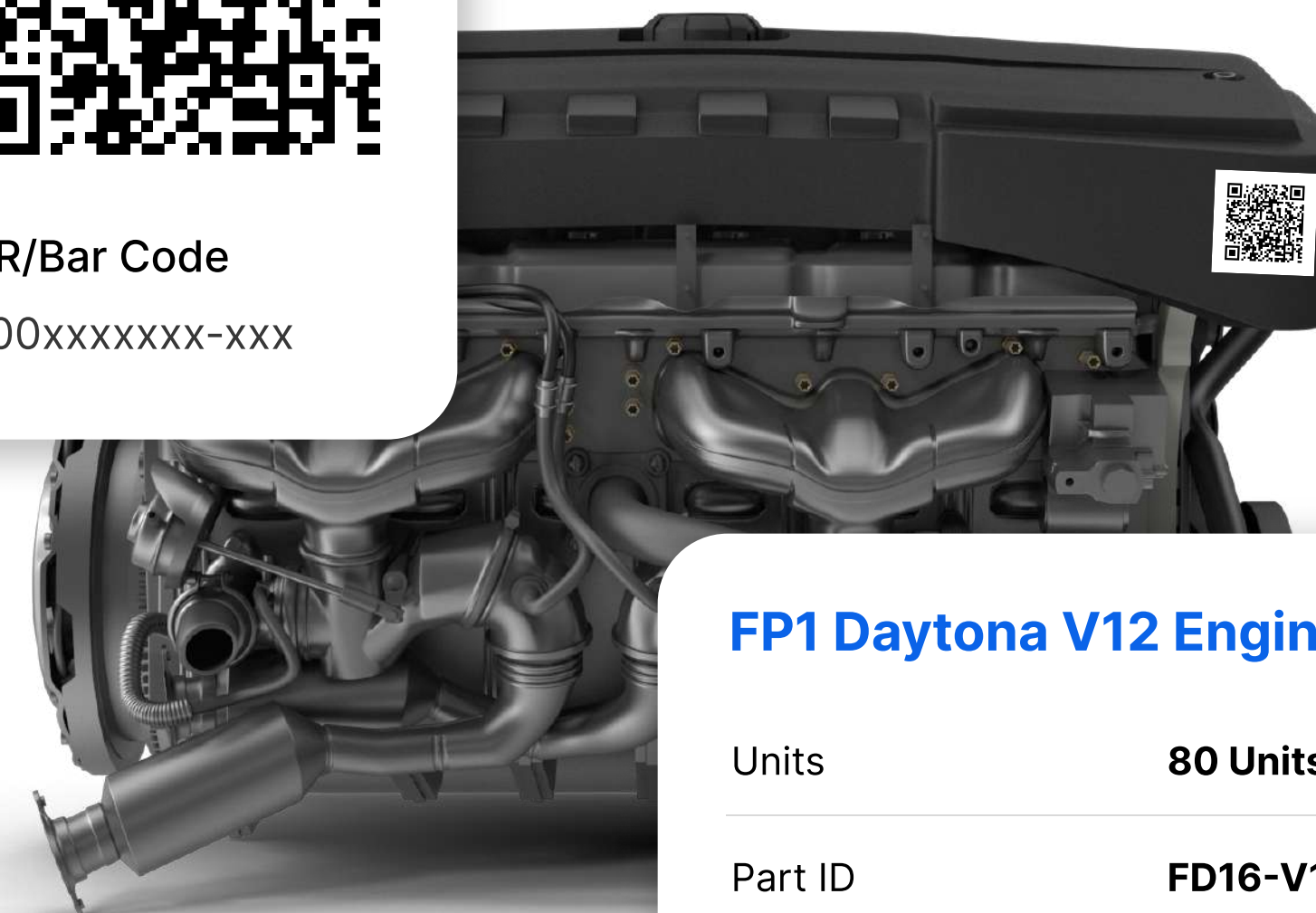
Scanning the barcodes or QR code speeds up inventory processes, reduces errors, and enhances visibility of part locations and quantities.

Automation also streamlines ordering, leading to reduced downtime and improved fleet maintenance efficiency. Furthermore, this technology provides added security and authentication, ensuring the use of genuine parts.

Overall, this integration optimizes parts inventory control and supports data-driven decision-making for fleet managers.



QR/Bar Code
000xxxxxxx-xxx



FP1 Daytona V12 Engine

Units	80 Units in Stock
Part ID	FD16-V12
Part Location	Stockroom 1st Row
Unit Cost	\$ 3990

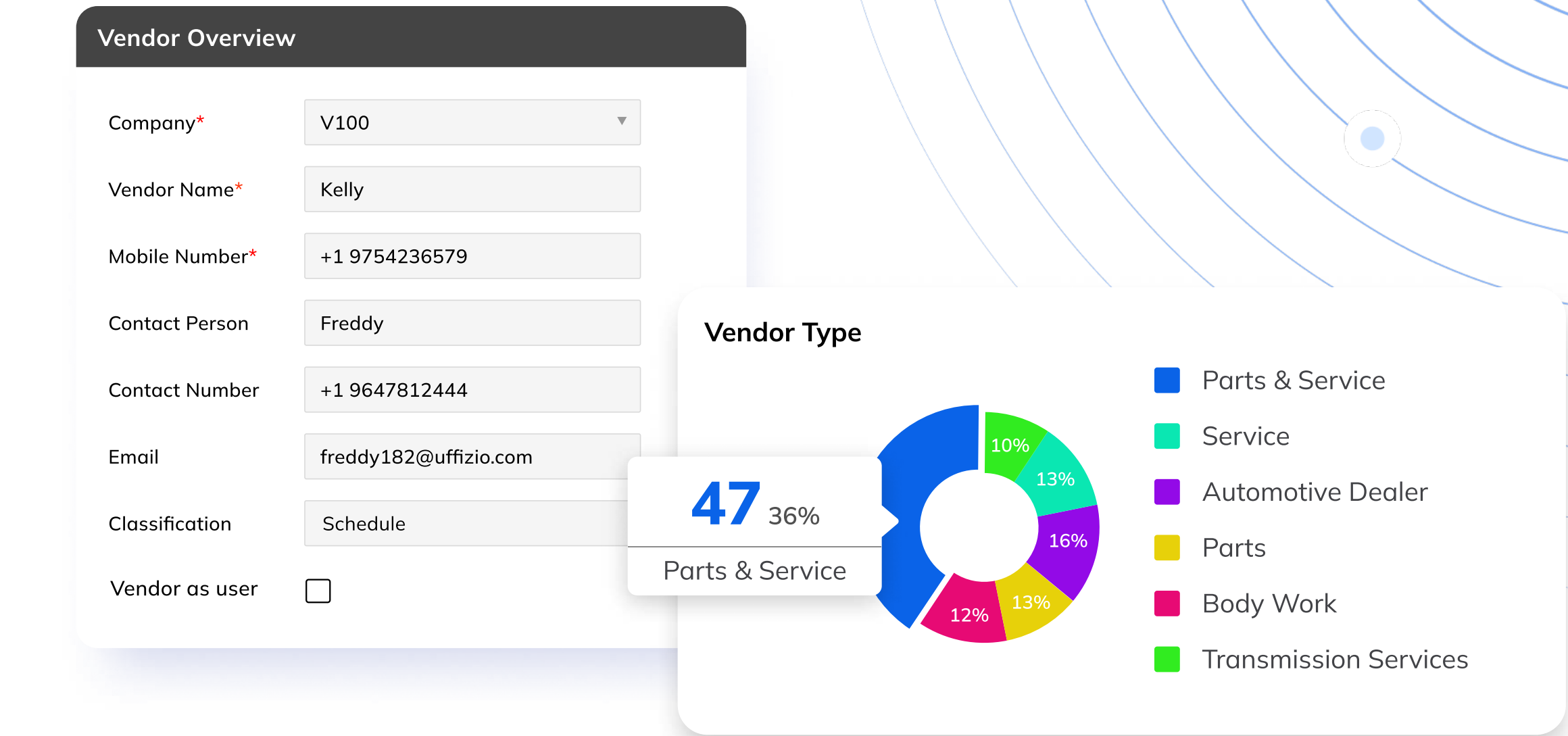
Vendor Management

Simplified way to include vendor registration and utilization for service orders.

The vendor registration process allows you to onboard and maintain a list of approved vendors who can supply spare parts and services for fleet maintenance.

Once vendors are registered, you can easily select them when creating service orders, ensuring that the necessary parts and services are sourced from reliable and approved suppliers.

This streamlined approach simplifies the vendor management process and facilitates efficient fleet maintenance operations. It ensures a timely and reliable supply of parts and services from trusted vendors.



Service order

Service order integration in parts inventory links service requests with parts availability and allocation. It ensures that required parts are on hand or ordered for each service task. This streamlines parts management, reducing delays and optimizing service order fulfillment. When a service order is created, the system checks inventory to verify parts availability. If the parts are present, they may be reserved for the service order. Otherwise, the system initiates the replenishment process. Throughout the service execution, parts usage is tracked and inventory records are updated. This integration enhances overall service efficiency and customer satisfaction by ensuring smooth parts allocation and minimizing stockouts.

Service Order Detail

Object* :

V100

Odometer Value

Priority Class*

Schedule

Vendor*

Select an option

Supervisor*

Com super

Mechanic*

Mechanic90

Service Type* :

Schedule

Status

☒ Active ☐ Allocated ☐ Close

Service Order						
Object	IMEI	Odometer	Service Type	Mechanic	Created by	Create Date
CMX 548	369785103	964211	Schedule	Mech1	mech1@uffizio.com	15-06-23 12:00 PM
KLP - 978	789410305	648752	Emergency	Sam P	4254@gmail.com	15-06-23 05:22 PM
JNX - 971	564789211	21456	Non Schedule	M. Lopez	kcm@uffizio.com	23-06-23 08:10 AM
WRT 124	789452101	874521	Schedule	Michel	tire11@gmail.com	23-06-23 06:30 PM
HUJ-i098	978542011	914750	Non Schedule	Roger S.	mech2@uffizio.com	01-08-23 08:45 AM
Honda - 94	364548245	564789	Schedule	Cliffy	paula@uffizio.com	01-08-23 10:00 AM
PS - 098	789456123	612370	Emergency	Mark	mech1@uffizio.com	01-08-23 12:00 PM

Real-Time Inventory Tracking for **Fleet Maintenance**

Challenges

- Maintaining an efficient fleet for on-time deliveries and customer satisfaction.
- Tracking parts inventory across multiple locations leading to stockouts, delayed repairs, and increased downtime.

Solution

- Implementing a real-time parts inventory management system.
- Barcode or RFID integration for accurate and up-to-date inventory information.

Results

- Streamlined parts procurement process.
- Reduced stockouts and minimized vehicle downtime.
- Optimized parts replenishment and inventory levels.
- Smooth fleet operations, timely maintenance, and improved customer service.

Alloy Wheels	
Units	60 Units in Stock
Part ID	569 - TY
Part Location	Stockroom 6th Row
Current Cost	\$ 133.63



Optimal Spare Parts Management for Heavy Machinery

Challenges

- Construction companies dealing with diverse heavy machinery requiring specific spare parts for maintenance and repairs.
- Ineffective spare parts management leading to unplanned downtime, costly emergency repairs, and project delays.

Solution

- Implemented a parts inventory management system with advanced categorization and part identification features.
- Implementing barcode or QR code enabled quick and accurate identification of parts during procurement and maintenance.
- Categorized spare parts based on equipment types, models, and usage.

Results

- Reduced unplanned downtime and minimized emergency repairs.
- Improved project timelines and increased productivity.
- Smooth machinery operations and enhanced cost savings.



Old Gear Chain Machinery

Last updated 06 June 2023

ID ID 156
Quantity 36 Units
Total Value \$5609

! RESTOCK

Old Gear Chain Machinery



Serial No SR190064

Quantity 300

Level 36

Type Construction Vehicles

Vendor PL Supply House

Total Cost \$ 69,500

CANCEL

CONFIRM RESTOCK



Our software is designed to be **flexible, scalable, and customizable**.
We understand that every business is unique, and we work closely with our customers to ensure that our solutions are tailored to meet their specific needs.

Thank you!



info@uffizio.com | www.uffizio.com